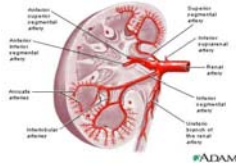


# UNITED HOSPITAL CENTER

## PATIENT EDUCATION

### NUCLEAR RENOGRAM



Your physician has referred you to the Diagnostic Services Department at United Hospital Center for a Procedure known as a renogram.

Renography has its greatest value in determining kidney function or diminished blood supply or both; urinary tract obstruction whether caused by stones, tumors, etc.; follow-up after renal artery reconstruction or kidney transplant; and screening patients for renal hypertension.

Prior to your examination, if you are taking any of the medications listed below, please follow the guidelines listed:

#### **Ace Inhibitors**

Vasotec, Captopril, Montapril  
Lisinspril, Prinivil, etc.

#### **Calcium Channel Blockers**

Procardia, Isonitin  
Verelan, Cardizem  
Calan, etc.

**Discontinue** 72 hours prior to the exam

**Discontinue** 24 hours prior to the exam.

#### **Diuretics**

**DISCONTINUE** 48 hours prior to the exam

You will arrive in the Diagnostic Services Department, where the technologist will adjust your body position relative to the nuclear camera for acquisition of your images.

You will be given an injection, in a vein in your arm, of a small amount of radioactive material which is picked up by the kidneys. A series of pictures will be acquired on the camera. If Captopril, renogram is needed, a 2nd injection will be given four hours later and images taken.

**LENGTH:** Initial images approximately 35 minutes 2nd injection after 4 hours with images (if needed)

If you are pregnant, or think you might be, tell your doctor and the technologist **BEFORE** your exam.

**DISCLAIMER:** The content contained in this patient education is presented solely with the intent of providing public service information on health and health-related issues. This information is neither intended nor implied to be a substitute for professional medical advice. Always consult your physician or other qualified health provider prior to utilizing any of the information presented in this patient education. UHC makes no warranty, representation or guaranty as to the content, accuracy, timeliness or completeness of the information presented in this patient education or that the information may be relied upon for any reason.

Revised: October 2009