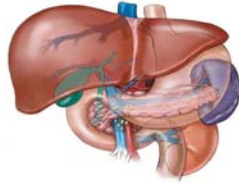


UNITED HOSPITAL CENTER

PATIENT EDUCATION

NUCLEAR LIVER IMAGING



Your physician has referred you to the Diagnostic Imaging Department at United Hospital Center for a procedure known as a liver scan.

The indications for liver imaging include the diagnosis of hepatomegaly (liver enlargement) versus abdominal masses, evaluation for liver metastases in patients with known malignancies, work-up of patients with cirrhosis or hepatitis, diagnosis of patients with jaundice, trauma patients with suspected liver rupture or hematoma.

No actual preparation is necessary, however, you should not have had any x-ray studies in which you received barium within 5-7 days of your liver scan.

You will be injected, in a vein in your arm, with a small amount of radioactive material which concentrates in the liver. A series of pictures will then be taken in different positions.

LENGTH: Approximately 45 minutes

If you are pregnant, or think you might be, tell your doctor and the technologist **BEFORE** your exam.

DISCLAIMER: The content contained in this patient education is presented solely with the intent of providing public service information on health and health-related issues. This information is neither intended nor implied to be a substitute for professional medical advice. Always consult your physician or other qualified health provider prior to utilizing any of the information presented in this patient education. UHC makes no warranty, representation or guaranty as to the content, accuracy, timeliness or completeness of the information presented in this patient education or that the information may be relied upon for any reason.

Revised: October 2009