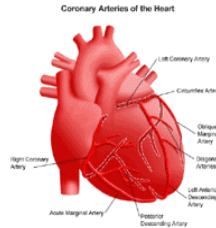


UNITED HOSPITAL CENTER PATIENT EDUCATION

MYOCARDIAL PERFUSION IMAGING (ADENOSINE)



Your physician has referred you to the Diagnostic Imaging Department at United Hospital Center for a Myocardial Perfusion Scan using Adenosine. Adenosine is a drug used as a substitute for exercise during a stress test.

A small needle will be placed in a vein in your arm. A nuclear imaging technologist will administer a small amount of a radioisotope (Cardiolite) through the same IV tubing. You will be asked to drink several cups of water. After approximately 30 minutes, the technologist will acquire the initial set of images. These pictures will take 12 minutes. Next, you will be asked to walk very slowly on the treadmill for four minutes. If you are unable to walk, you will be asked to sit in a chair and move your legs to simulate stress. Through this needle (IV), a nurse will administer the Adenosine. During the administration, a nurse and a physician will monitor your heartbeat, blood pressure, and breathing. When the injection is completed, the nurse will continue to monitor you for another 5 minutes. The Nuclear Imaging Department will begin taking your images after a 45-60 minute wait period. Again, you will be asked to drink several cups of cold water. A Cardiologist will review your images and a report will be sent to your physician. Patients scheduled for this exam are asked to **follow** the instructions listed below:

1. Nothing to eat or drink 6 hours before scheduled procedure.
2. If you are receiving oral or IV Theophylline derivatives, these should be discontinued 48 hours prior to the Adenosine stress test, however, discontinuing 24 hours prior to exam is acceptable. You should also **avoid caffeine-containing drugs (including coffee and soda) for 24 hours prior to the procedure.**

Drugs containing theophylline:

Theo-24	Bronkodyl	Sustaire
Theovent Long-Acting	Uniphyll	Theo-Dur
Slo-bid Gyrocaps	Constant-T	Respbid
Theospan-SR	Theo-Dur Sprinkle	Theochron
Theobid Jr. Duracap	Elixophyllin SR	Aerolate
Theopyllin S.R.	Theobid Duracap	Theoclear L.A.
Slo-Phyllin Gyrocaps	Quibron-T/SR	Theolair-SR

Drugs containing caffeine:

Cafergot	Wigraine	Darvon Compound
Anacin	Florinal	Exedrin
Synalgos-DC	NoDoz	

You **SHOULD** take other medications previously ordered unless discontinued by your referring physician.

LENGTH: Injection and initial images -- approximately 1.5 hours
Stress Test and images -- approximately 2.0 hours
Total Exam Time -- **approximately 4.0 hours**

DISCLAIMER: The content contained in this patient education is presented solely with the intent of providing public service information on health and health-related issues. This information is neither intended nor implied to be a substitute for professional medical advice. Always consult your physician or other qualified health provider prior to utilizing any of the information presented in this patient education. UHC makes no warranty, representation or guaranty as to the content, accuracy, timeliness or completeness of the information presented in this patient education or that the information may be relied upon for any reason.

Revised: October 2009