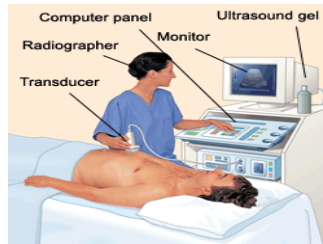


UNITED HOSPITAL CENTER

PATIENT EDUCATION

ABDOMINAL ULTRASOUND



Your physician has referred you to the Diagnostic Services Department at United Hospital Center for an abdominal ultrasound or abdominal sonogram. This examination uses sound waves to obtain images of your abdominal organs. If the test is being performed to evaluate any abdominal organs other than the kidney and/or aorta, it is important that you **not eat or drink** anything for at least **eight (8) hours prior** to your exam.

If possible, wear comfortable clothing that will allow access to your abdomen. If not, you will be asked to wear a hospital gown. Upon entering the exam room the sonographer, a technologist specially trained in ultrasound, will position you on a table. Gel will be applied to your skin to prevent air from getting between the ultrasound source and your skin. A small probe, called a transducer, will be passed over the surface of your abdomen. It may be necessary for the sonographer to apply some pressure to your skin with this probe. You may be asked to hold still and control your breathing. When the necessary images are filmed and checked, the gel can be wiped off.

Please keep in mind that though the sonographer is well qualified to perform your sonogram, only a physician may interpret it. Therefore, sonographers do not discuss results with patients. Any questions regarding the results of your sonogram should be directed to the physician who requested your exam.

LENGTH: Approximately 30 minutes

DISCLAIMER: The content contained in this patient education is presented solely with the intent of providing public service information on health and health-related issues. This information is neither intended nor implied to be a substitute for professional medical advice. Always consult your physician or other qualified health provider prior to utilizing any of the information presented in this patient education. UHC makes no warranty, representation or guaranty as to the content, accuracy, timeliness or completeness of the information presented in this patient education or that the information may be relied upon for any reason.

Revised: October 2009