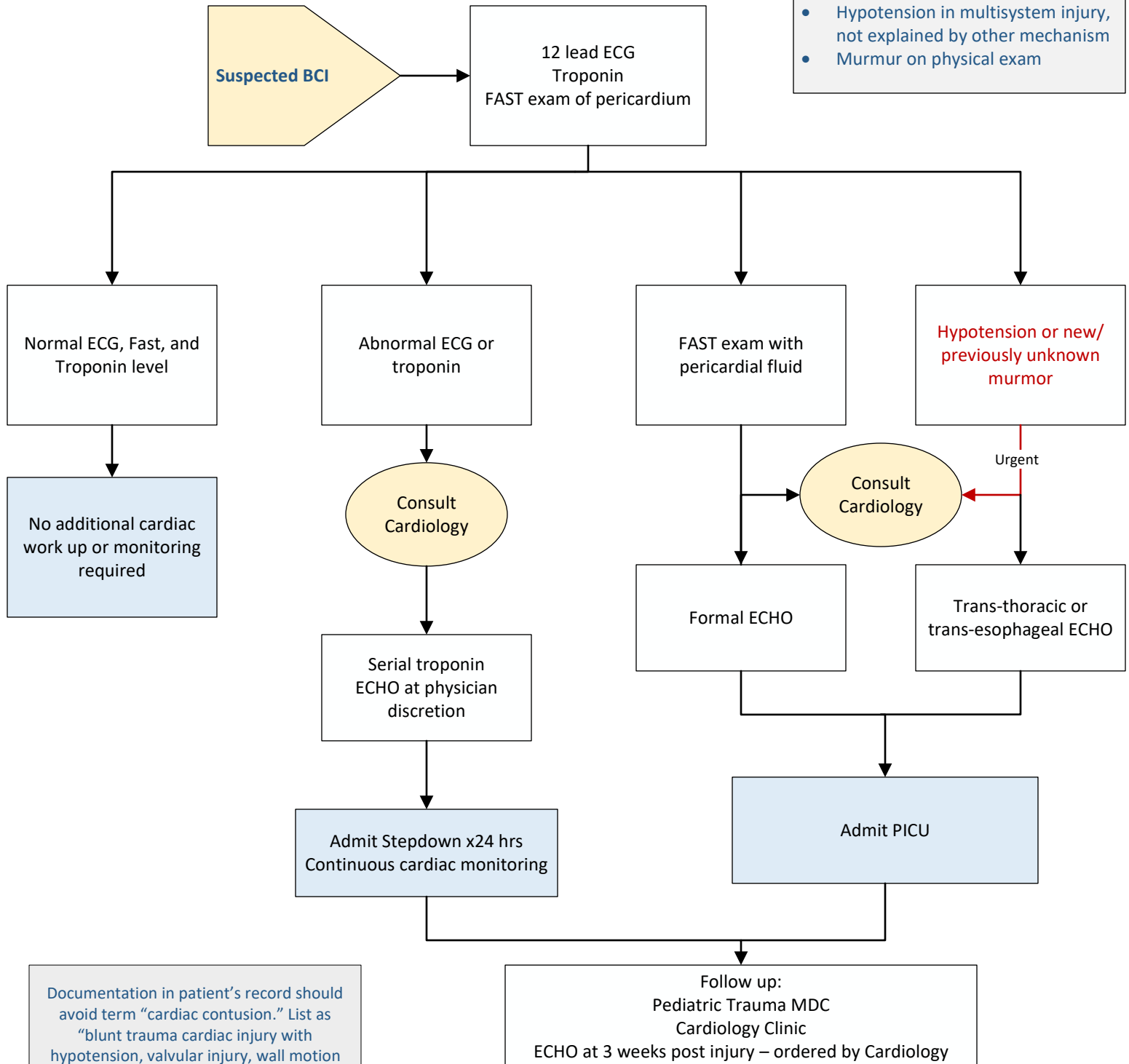


## Practice Management Guideline Blunt Cardiac Injury

### Suspicion of Blunt Cardiac Injury (BCI):

- History of direct blow to precordia or epigastrium
- Confirmed fracture or bruising of manubrium, sternum, or xyphoid
- Rhythm disturbance of initial ECG monitoring
- Hypotension in multisystem injury, not explained by other mechanism
- Murmur on physical exam



Documentation in patient's record should avoid term "cardiac contusion." List as "blunt trauma cardiac injury with hypotension, valvular injury, wall motion abnormality, arrhythmia, etc."

Approved by Medical Director Pediatric Cardiac Critical Care

Guideline does not replace clinical judgement and is not intended to be prescriptive for all patients.

Created 5/2025