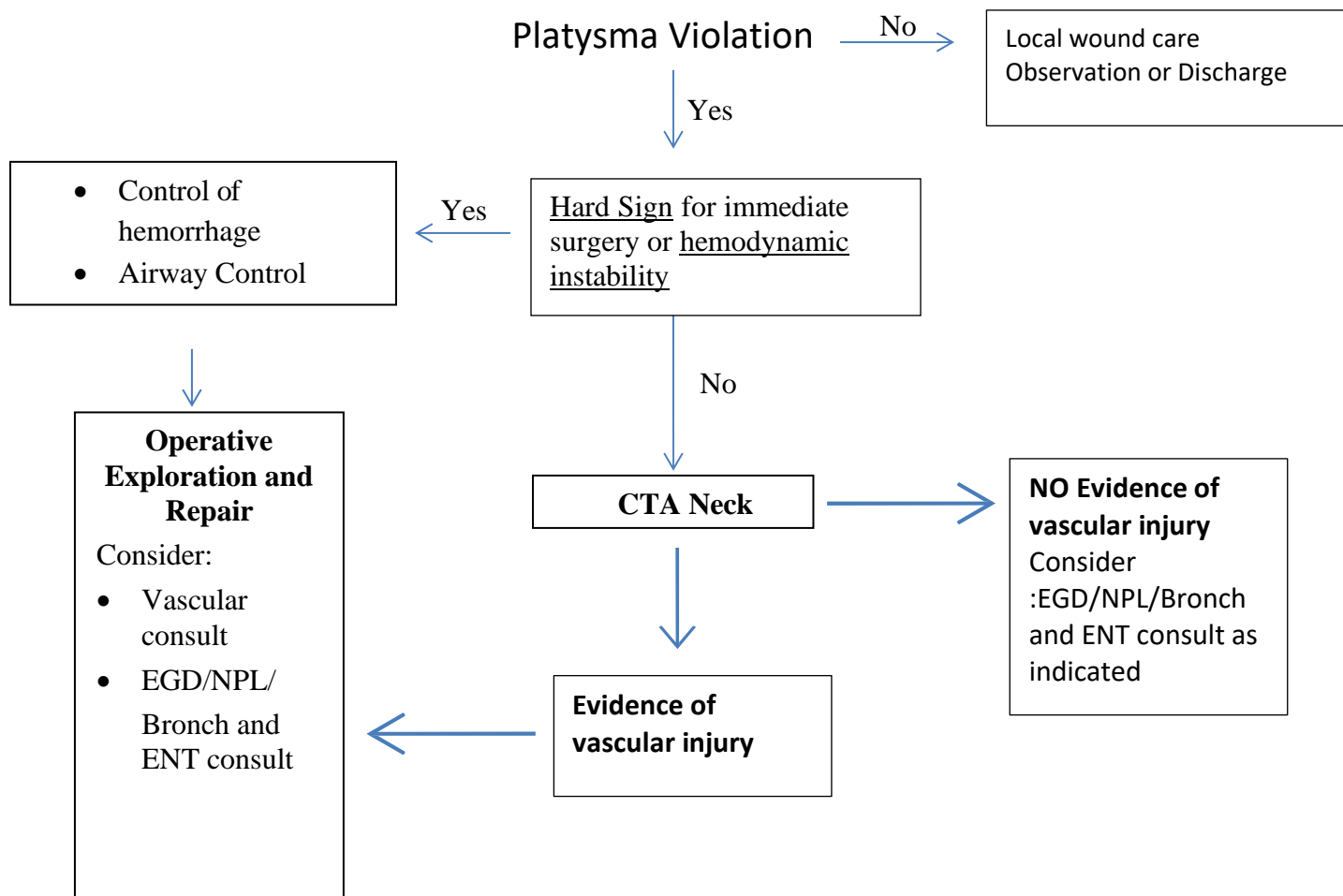


Penetrating Neck Trauma



Hard Signs

Airway Compromise
Shock
Pulsating bleeding
Expanding hematoma
Unilateral pulse deficit
Bruit or palpable thrill
Extensive SQ Air
Stridor/Hoarseness
Signs of stroke

References

1. Sperry J, et al. Western Trauma Association critical decisions in trauma: penetrating neck trauma. **J Trauma Acute Care Surg.** 2013 Dec;75(6):936-40.
2. Shiroff AM, et al. Penetrating neck trauma: a review of management strategies and discussion of the 'No Zone' approach. **Am Surg.** 2013