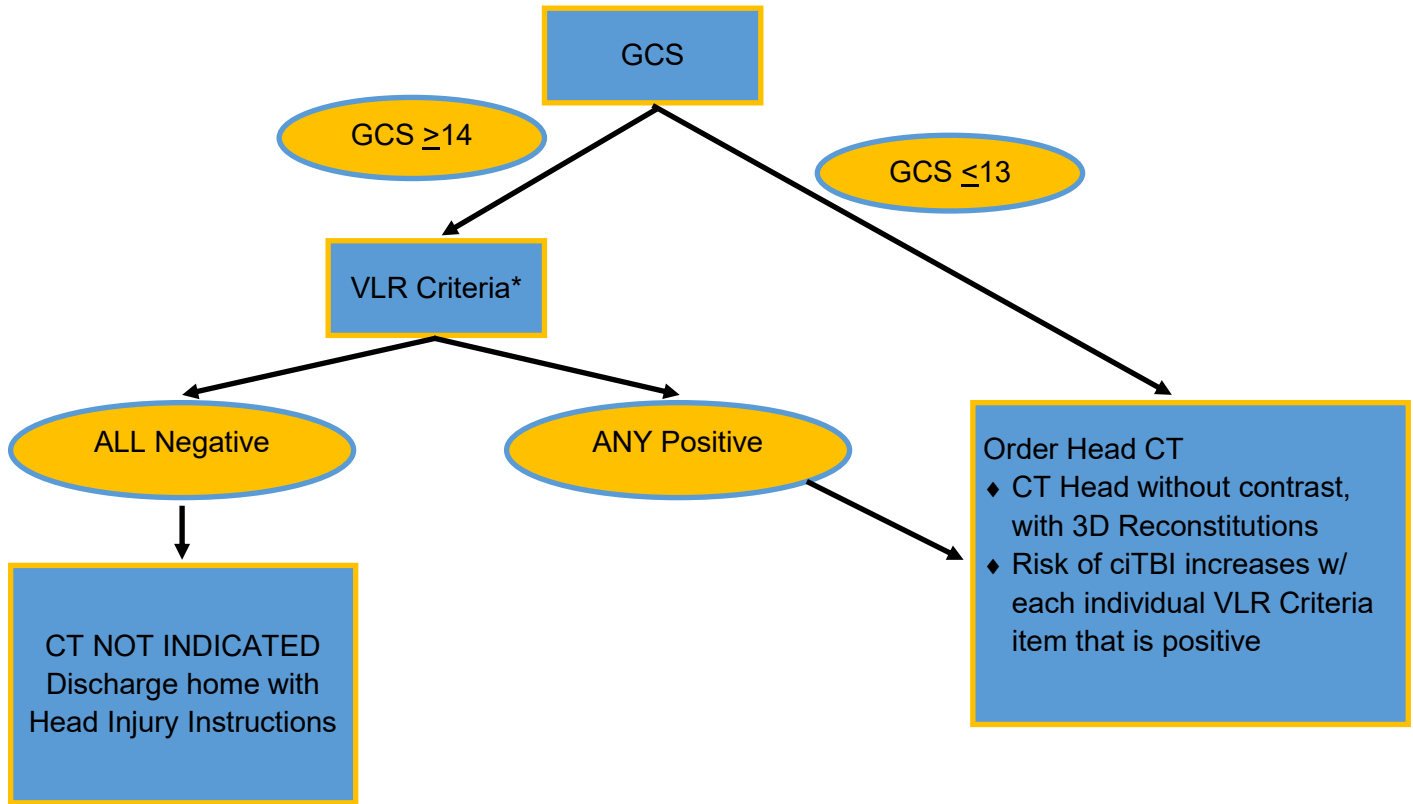


Practice Management Guideline Pediatric Head Trauma & Neuroimaging



VLR Criteria

- Normal Mental Status (<3.5%)[^]
- No loss of consciousness (LOC), or brief LOC lasting less than 5 sec (0.9-1.4%)
- Non-Severe MOI** (0.5%)[^]
- No Vomiting (1%)[^]
- No sign of basilar skull fx (7.4%)[^]
- No palpable or unclear skull fx (large hematoma) (3.5%)[^]
- No severe headache (1%)[^]

Severe Mechanism of Injury (MOI)**

- MVC with patient ejection, death of another passenger, or rollover
- Pedestrian or bicyclist without helmet struck by motorized vehicle
- Fall >3ft (children under 2yo)
- Fall >5ft (children 2yo and older)
- Head struck by high impact object

GCS = Glasgow Coma Scale

***VLR** = Very Low Risk for clinically important traumatic brain injury (ciTBI)

ciTBI defined as:

- Death from TBI
- Neurosurgery
- Intubation for >24 hrs for TBI
- Hospitalization of 2 nights or more associated with TBI on CT

[^] indicated estimated increased risk for individual criteria items

VLR for ciTBI = 99.95-100% (99.7-100.0%)

Adapted from Kuppermann et al, Lancet 2009

GCS in TBI

GCS 14-15: **Mild**
 GCS 9-13: **Moderate**
 GCS 3-8: **Severe**