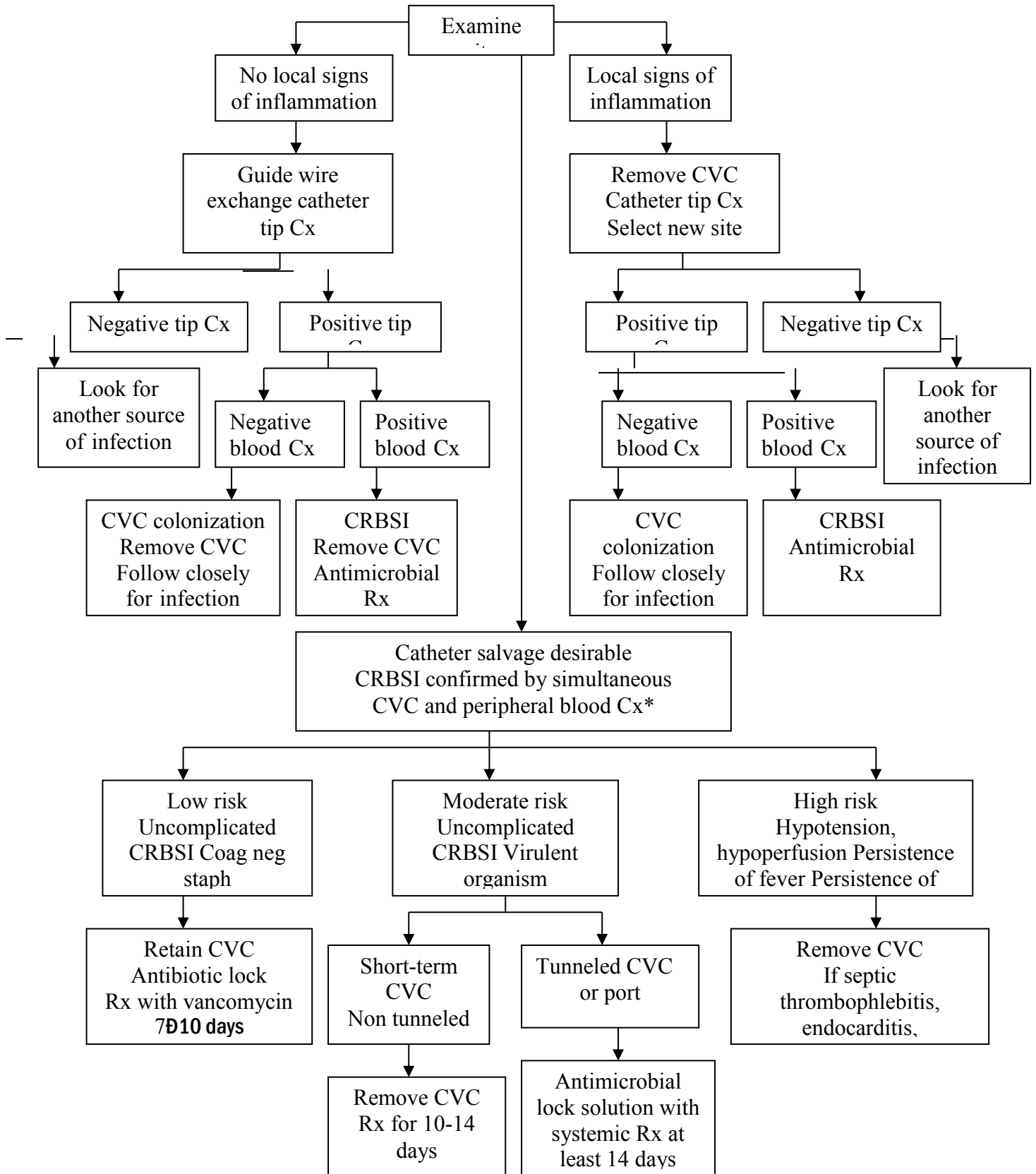


SUSPECTED CENTRAL VENOUS CATHETER INFECTION



*CRBSI present when simultaneously drawn blood cultures are 5-fold greater from CVC than periphery or when blood from CVC has growth at least 2 hours earlier than periphery.

Ref: *Current Surgical Therapy: 8th Edition*. ed: John Cameron, MD. Elsevier, Philadelphia 2004, pg 1096-1100.