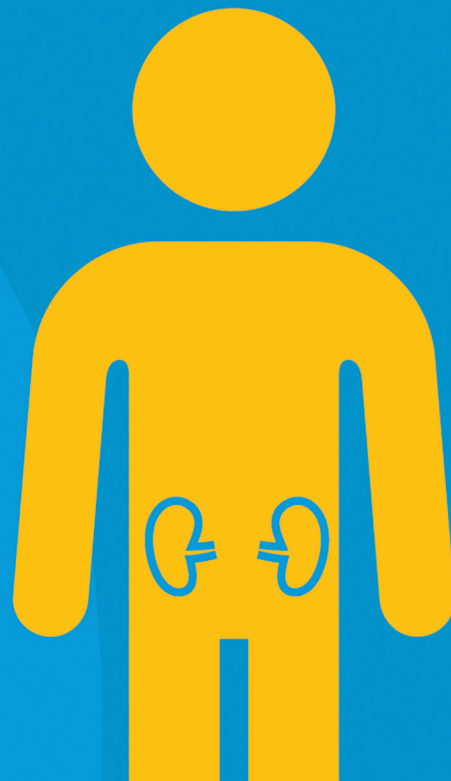


Estimated Post Transplant Survival



What is EPTS?

Breaking Down EPTS Scores in Kidney Transplant

An Estimated Post Transplant Survival (EPTS) Score is assigned to all adult patients on the kidney transplant waitlist. Scores range from 0-100, with lower scores indicating a longer time to benefit from a kidney.^[1] Your score is considered in relation to the EPTS scores of all other people in need of a kidney transplant.

What determines EPTS?

The score is based on four factors:

- Age
- Dialysis Status
- History of Previous Organ Transplants
- Diabetes Status

EPTS Ranges Explained^[2]

LOW EPTS

Closer to 0

Candidates with a lower EPTS score are likely to benefit from a transplanted kidney for a longer period of time.

HIGH EPTS

Closer to 100

Candidates with a higher EPTS score are likely to benefit from a transplanted kidney for less time.

Why are EPTS scores important?^[3]

It is important to match waitlisted patients with lower EPTS scores with kidneys that are expected to function longer (lower KDPI scores). This may help reduce the number of patients who may need a repeat transplant, thereby increasing kidney availability for those patients who need a transplant for the first time.



TRANSPLANT ALLIANCE

PHONE: 304-974-3004 / FAX: 304-598-4899

PO Box 8301 Morgantown, WV 26506-9238

[1] https://optn.transplant.hrsa.gov/media/1511/guide_to_calculating_interpreting_epts.pdf

[2] <https://unos.org/news/in-focus/what-is-epts/#:~:text=A%20computer%20calculates%20your%20score,benefit%20with%20a%20transplanted%20kidney.>

[3] <https://unos.org/news/in-focus/what-is-epts/>